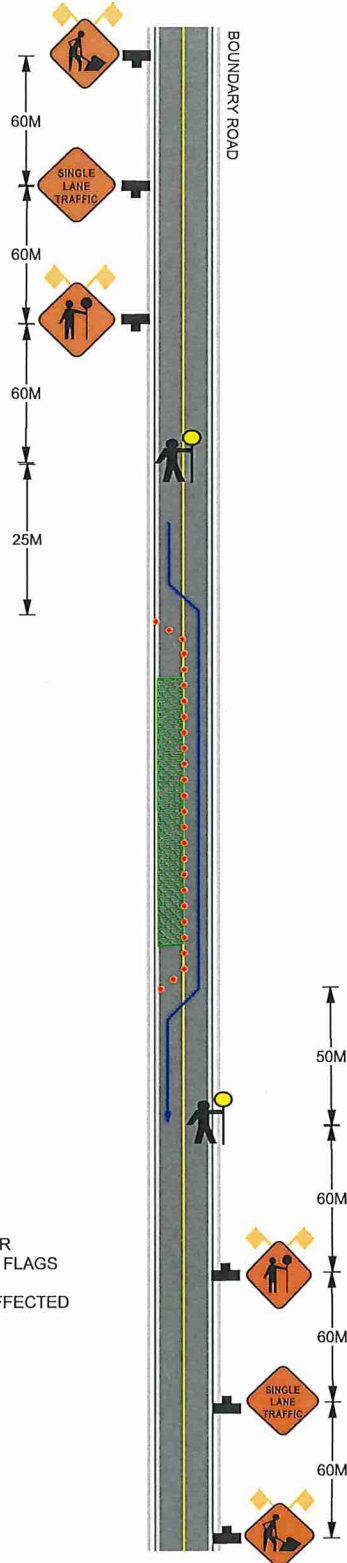


JUNE 2018
 HOURS OF OPERATION 9:00AM - 3:00PM



Canadian Utility Construction
 Scott Sinclair 604-842-2339

Traffic Control Will Be Provided By
 Canadian Utility Construction
 Michelle Parks 604-313-5769

NOTE:

SPEED LIMIT ON BOUNDARY ROAD IS 60KM PER HOUR
 ALL SIGNS WILL BE PLACED ON WINDMASTERS WITH FLAGS

TRAFFIC CONTROL WILL ASSIST WITH DRIVEWAYS EFFECTED
 BY WORK ZONE CLOSURE

ALL CROSSWALK - SIDEWALKS WILL REMAIN OPEN

TRAFFIC CONTROL WILL BE EQUIPPED WITH 2 WAY
 RADIOS

- LEGEND**
- DIRECTION TRAFFIC FLOW 
 - TUBULAR MARKERS 
 - WORK AREA 
 - SIGN STANDS 
 - TRAFFIC CONTROLLER 
 - BUS STOP 